

IDEAL 0135

Large format manual rotary trimmer with professional features and 135 cm cutting length.

Safety cutting head

Self sharpening rotary blade

Automatic clamping system

Paper collection tray

Solid metal construction

Slotted side brackets for oversized formats



Technical specifications

Cutting length	1350 mm
Cutting height	max 0.8 mm
Table depth	295 mm
Table height	865 mm
Dimensions	980 x 1590 x 480 mm (H x W x D)
Weight	32 kg

Product characteristics

Slotted side brackets for cutting oversized formats. Suitable for cutting and trimming of blueprints, paper and foils, drawings, plans, photos, posters or similar large format digital printouts. Smooth running safety cutting head with self sharpening rotary blade made from special hardened steel. Counter blade made of stainless knife steel. Automatic clamping system with transparent clamp bar. Practical collection tray for trimmings. Complete with sturdy metal stand. Convenient paper roll holder available as an option (at an extra cost).

IDEAL 0135

Features



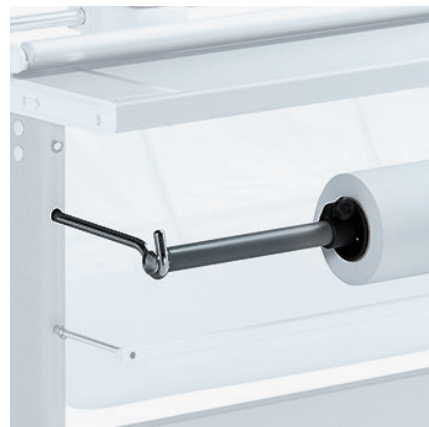
SAFETY CUTTING HEAD

Safety cutting head with self sharpening rotary blade for efficient, precise and safe cutting.



PAPER COLLECTION TRAY

The paper waste is collected conveniently underneath the working table of this rotary trimmer.



PAPER ROLL HOLDER

As an option, the rotary trimmer can be supplied with a convenient paper roll holder at an extra cost.



IDEAL