

IDEAL 2465

max.

24

sheets

← 24 cm →

Convenience and performance next to your desk – business shredder, also suitable for small work groups. With SSC – smart shred control – for shredding without paper jams.

Level P-2 4 mm strip cut

Sheet capacity*: 22-24 | 19-21

Level P-4 4 x 40 mm particle cut

Sheet capacity*: 16-18 | 13-15

Level P-5 2 x 15 mm particle cut

Sheet capacity*: 11-13 | 9-11

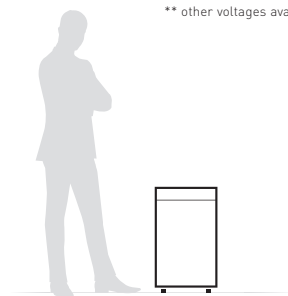


* A4 paper 70 g/m² | 80 g/m²

Technical specifications

| | |
|-----------------------|-----------------------------|
| Volume | 50 litres (cabinet) |
| | 35 litres (shred bin) |
| Power | 230 V / 50 Hz** |
| Motor capacity | 580 Watt single phase motor |

** other voltages available



| | |
|-------------------|--------------------------------|
| Dimensions | 635 x 395 x 291 mm (H x W x D) |
| Weight | 22 kg |

Product characteristics

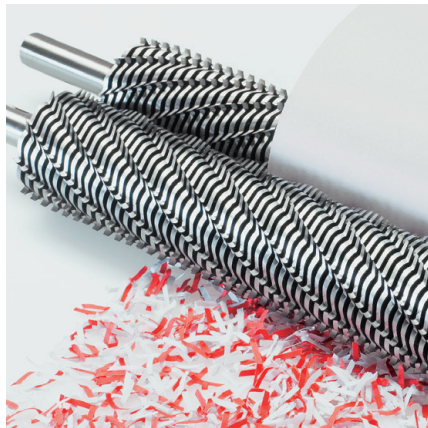
SPS – (Safety Protection System) package: patented, electronically controlled, transparent safety flap in the feed opening as additional safety element; EASY-SWITCH – intelligent control element indicating the operational status of the shredder with varying colour codes and back-lit symbols; automatic reverse and power cut-off (avoids paper jams); automatic stop if the shred bin is full; electronic door protection via a magnetic proximity switch; double motor protection against over-heating; ZERO ENERGY standby mode: Complete, automatic disconnection from power supply after 30 minutes. Photo cell controlled automatic start and stop. With SSC – smart shred control: a smiley on the EASY-SWITCH element indicates the used sheet capacity during shredding process to avoid paper jams. High-quality, paper clip proof cutting shafts from special hardened steel with lifetime guarantee. Strip cut model and 4 x 40 mm cross cut model suitable for shredding the most common CDs/DVDs. Quiet, powerful and energy-efficient single phase motor. Fully closed gear box housing and durable gears. High-quality wooden cabinet, mobile on castors. Convenient environmentally-friendly shred bin (no disposable shred bags required).

IDEAL

WWW.IDEAL.DE

IDEAL 2465

Features



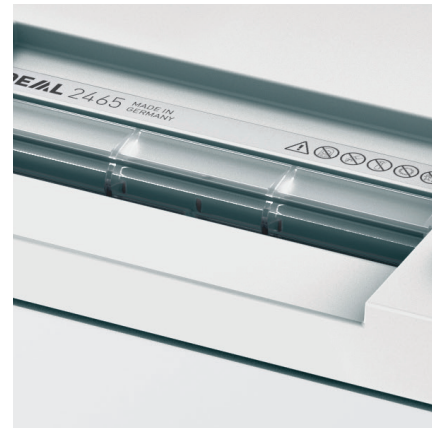
SOLID STEEL CUTTING SHAFTS

Robust and durable: high-quality paper clip proof cutting shafts with lifetime guarantee under conditions of fair wear and tear.



EASY-SWITCH

Ease of operation: intelligent multifunction switch element with integrated optical signals indicating the operational status.



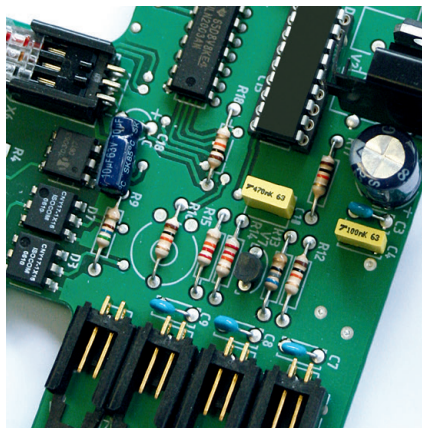
PATENTED SAFETY FLAP

Extremely safe: electronically controlled safety flap in the feed opening to keep fingers, ties or other objects away from the cutting shafts.



CONVENIENT SHRED BIN

The environmentally-friendly shred bin can be removed easily and cleanly from the cabinet. The bin can be used with or without disposable shred bag.



AUTOMATIC FUNCTIONS

Tried and tested: Reliable printed circuit board controlling all automatic functions of the shredder including the energy saving mode.



SSC - SMART SHRED CONTROL

That's fun – shredding without paper jams! The smiley has a capacity control function: If it shines green, everything is ok. If the smiley flashes, the shredder has reached its capacity limit.



IDEAL

certificate
no. **DP 15044**
dated 2015-03-25

Translation In any case, the German original shall prevail.

GS Certificate

Name and address of the holder of the certificate: (customer) **Krug & Priester GmbH & Co. KG**
Simon-Schweitzer-Straße 34
72336 Balingen

Product designation: **file shredder**

Type: **11231001, 11236001, 11240401, 11241001, 11244501, 11246501, 11250203**

Testing based on: **DIN EN 60950-1:2014 Information Technology Equipment – Safety – Part 1: General requirements**
EN 60950-1:2006+A11:2009+A1:2010+A12:2011 Information Technology Equipment – Safety – Part 1: General requirements
IEC 60950-1:2005+AMD1:2009+AMD 2:2013 Information Technology Equipment – Safety – Part 1: General requirements
EN 1010-1:2004+A1:2010 Safety of machinery – Safety requirements for the design and construction of printing and paper converting machines; Part 1: common requirements

Test report: **612.17 - So/Ho**
A 14199
Produktgruppe: 001.1001

Further details:

The type tested meets the requirements specified in article 21 para. 1 of the German Product Safety Act. The holder of the certificate is entitled to affix the GS mark shown overleaf to the products complying with the type tested. At that, the holder of the certificate shall observe the conditions specified overleaf.

The present certificate including the right to affix the GS mark is valid until: **2020-03-24**

Further provisions concerning the validity, the extension of the validity and other conditions are laid down in the Rules of Procedure for Testing and Certification.



Dipl.-Ing. Andreas Vogl